

QNES Series

Explosion-proof LED indicator & electronic signal horn with convenient selection of solid/blink, strobe, and revolving flashing operation



QNES



QNES-SUS

PRODUCT SPECIFICATION

QNES | QNES-SUS

Materials Lens-Tempered glass, Filter-PC, Bracket-ST316L, Protection cage-ST316L, Housing-Al(QNES), ST316L(QNES-SUS)

Ambient operating temperature

-40°C ≤ Tamb ≤ +60°C(T5)

-40°C ≤ Tamb ≤ +45°C(T6)

Explosion protection rating

IECEX - Ex db IIC T6/T5 Gb, IP66

ATEX - Ex II 2G Ex db IIC T6/T5 Gb, IP66

NEPSI, CCC - Ex db IIC T5/T6 Gb

KCs - Ex d IIC T6/T5, IP66

Certificates IECEX, ATEX, NEPSI, KCs, CCC

Housing standard color Red, MUNSELL No. 7.5B9 7/2

Cable Entry 1/2" NPT

Flashing rate(LF type) 60-80 flashes/min.

Strobe rate(LS type) 70-80 flashes/min.

Simulated revolving rate(LR type) 120-140RPM

- Explosion proof, multifunctional, and compact LED signal light designed for use in explosive gas environments with Ex d II C rating
- Explosion proof, multifunctional, and compact LED signal light designed for use in explosive gas environments with Ex d II C rating
- Features excellent shock and vibration resistance, maintenance significantly reduced with long-lasting LED light source
- A variety of sound selections between warning sounds, alarm sounds, melodies and voice messages to fit your sophisticated application needs
- Features superior durability with aluminum housing(QNES)
- STS housing provides superior durability and corrosion resistance(QNES-SUS)
- Fully enclosed structure with protection rating of IP66

QNES Explosion Proof Signal/ Warning Light and Electric Sounder Combination

Model number	Voltage	Current	Sound Pattern and Volume	Certificates	Weight	Color
QNES	DC12V	Max.	-WS-5 Warning sounds: Max.110dB		3.15kg	● R-Red ● A-Amber ● G-Green ● B-Blue
	-24V	1.872A	-WP-5 Special warning sounds: Max.110dB			
	AC110V	Max.	-WM-5 Melodies: Max.105dB			
	-230V	0.301A	-WA-5 Alarms: Max.105dB -WV-5 Customizable voices: 99-106dB			

QNES-SUS Explosion Proof Signal/ Warning Light and Electric Sounder Combination

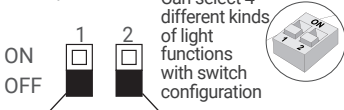
Model number	Voltage	Current	Sound Pattern and Volume	Certificates	Weight	Color
QNES-SUS	DC12V	Max.	-WS-5 Warning sounds: Max.110dB		7.60kg	● R-Red ● A-Amber ● G-Green ● B-Blue
	-24V	1.872A	-WP-5 Special warning sounds: Max.110dB			
	AC110V	Max.	-WM-5 Melodies: Max.105dB			
	-230V	0.301A	-WA-5 Alarms: Max.105dB -WV-5 Customizable voices: 99-106dB			

※ Max. built-in volume feature is based on WS, WP-Ch1 / WM-Ch5 / WA-Ch5.

※ In case of customized WV 5 tone type, there may be difference of volume depending on user's audio file type.

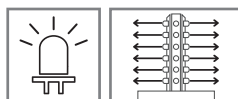
Instruction for Light Function Switch

ON=1/OFF=0



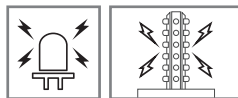
No.	1	2	Operation
0	0	0	LED Steady
1	0	1	LED Flashing
2	1	0	LED Strobe
3	1	1	LED Simulated revolving flashing

Operation



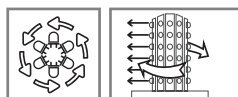
• **LED Steady/ Flashing**

Repeat operation of LED light on/off



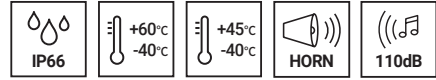
• **LED Strobe**

Short LED steady/flashing. Creates a xenon flashing effect by providing maximum electric current



• **LED Simulated Revolving Flashing**

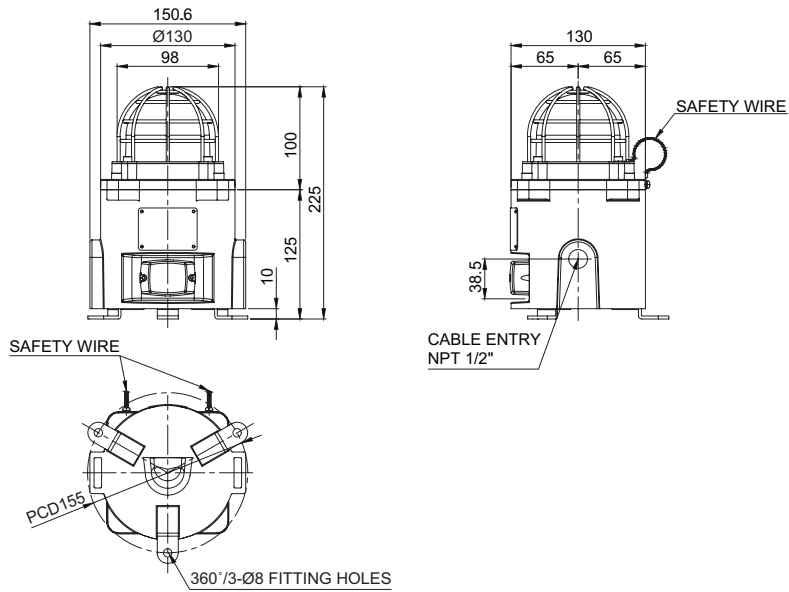
LED flashes steadily around the cylindrical LED filaments which makes a simulated revolving effect



Technical Diagram

Units: mm

QNES / QNES-SUS



Customization

Built-in explosion proof cable gland Standard type does not provide explosion proof cable gland
 2 ways cable entry
 M20x1.5 cable entry

Ordering Specification

QNES	-	WA	-	110/230	-	R	-	SUS	-	IECEX
[Model number]		[Sound]		[Voltage]		[Color]		[Housing Materials]		[Certificates]
QNES		WS-Warning sounds WP-Special warning sounds WM-Melodies WA-Alarms WV-Customizable voices		12/24-DC12V-24V 110/230-AC110V-230V		● R-Red ● A-Amber ● G-Green ● B-Blue		(Blank) - Al STS-ST316L		IECEX ATEX KCs CCC(NEPSI)